

Datamart Date Selection Behavior Reminder

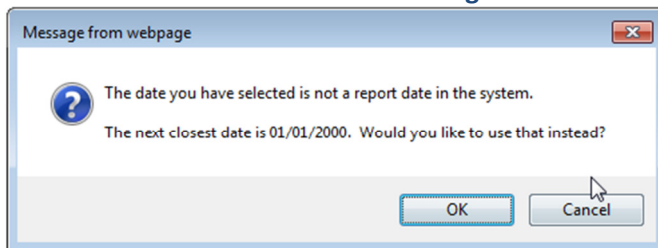
The Datamart From /To date selection ensures that valid dates are chosen for reporting. If an invalid date is selected, an error is displayed and the user can either accept the earlier date offered as an alternative or can enter another date. Below is a quick Help Guide detailing how valid dates are determined.

Valid dates are dependent upon into which range the desired dates fall (Daily range, Monthly range, Yearly range). The rules are also different based on which date is being selected (From or To Date). The grid below is a quick reminder of the date selection rules:

Date Type	Description	From Dates	To Dates
Daily range	Any date chosen is valid	From the date selected	To the date selected
Monthly range	End-of-month snapshot	From the first of the month	To the end of the month
Yearly range	End-of-year snapshot	From the first of the year	To the end of the year

The duration of any report can span different From/To date ranges. Based on the date being selected (From/To) and the range the date falls within (Daily, Monthly, Yearly), the date entered will be validated against the rules above. Below are examples of the error message you will see when From and To dates are determined to be invalid.

From Date Error Message



To Date Error Message

